

# Embryo transfer

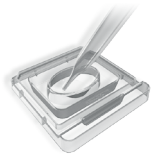
EmbryoGlue® 5 × 1.5 mL

## Before transfer



EmbryoGlue® 5 × 1.5 mL

Prepare centre well dishes with no less than 0.5mL of EmbryoGlue in the well and 0.5 mL in the moat and equilibrate at



**37°C and 6% CO<sub>2</sub> for 2-24 hours with the lid on.**

**In a non-humidified environment, dishes should not be equilibrated for > 6 hours.**

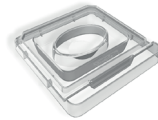
**Ensure use of non-toxic contact materials.**

## Day of transfer

**The embryo transfer is always performed the same way, regardless of transfer day.**

### 1. Pre-equilibration of embryos

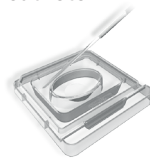
Place the embryos in the well containing equilibrated EmbryoGlue for a minimum of 10 minutes before transfer. The embryos can be held in EmbryoGlue for up to 4 hours. Equilibrate until transfer at



**37°C and 6% CO<sub>2</sub>  
Min 10 min with the lid on**

### 2. Rinse the transfer catheter

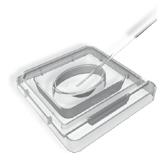
Attach the transfer catheter to the syringe and draw up approximately 0.5 mL of the equilibrated medium from the moat. Rinse the catheter by expelling EmbryoGlue back into the moat.



### 3. Load the catheter

After rinsing, draw 0.1 mL of EmbryoGlue from the well of the dish and expel until 20 µL is left in the catheter.

Under microscopic control, gently load the embryos into the catheter in approximately 5-10 µL of EmbryoGlue followed by a small volume of air.



### 4. Embryo transfer

For the embryo transfer, expel the embryos in approximately 30 µL and **slowly withdraw the catheter while maintaining the steady pressure on the plunger of the syringe.**

Make a final examination of the catheter.